



Instructions to Provide Water Service Line Material Information

STEP 1

Locate the service line pipe where it enters your home (exterior wall or floor).

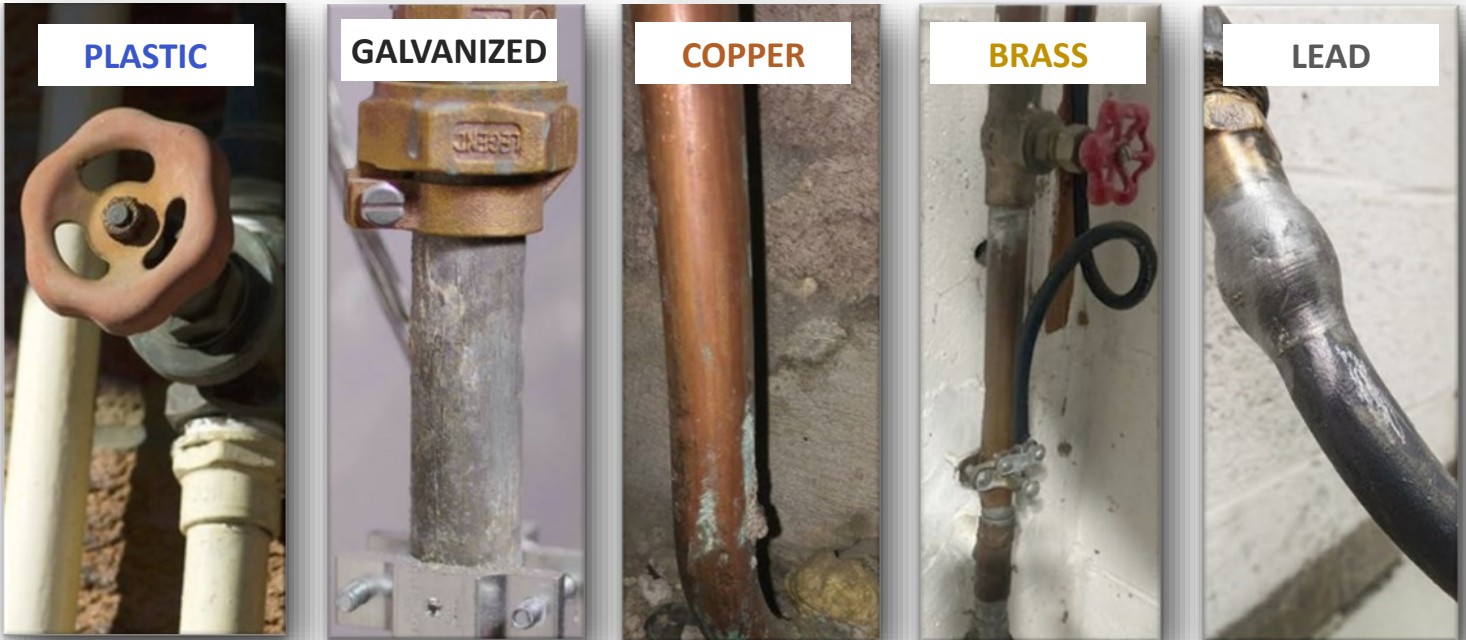


STEP 2

Use the images/descriptions below to identify the material type of the pipe. If the pipe is a silvery gray color, proceed to STEP 3. Otherwise, proceed to **FINAL STEP**.

STEP 3

Look for threads at connections. Galvanized pipe will have threads, lead will not. If a strong magnet sticks to the pipe, it is galvanized pipe; a magnet will not stick to lead.



	Outer Appearance	Threads at Connection	Scratch Test (Coin or Key)	Magnet Test
PLASTIC	Usually white, but can be blue or black	No	N/A	N/A
GALVANIZED	Dark gray or black, straight/not bendable	Yes	Hard to scratch, remains gray	Magnet sticks
COPPER	Penny color, may have green corrosion	No	N/A	Magnet does not stick
BRASS	Brown, may have green corrosion	Yes	N/A	Magnet does not stick
LEAD	Dull gray, bendable, often curves between wall/floor and valve	No	Shiny silver	Magnet does not stick

FINAL STEP

Submit form, including pictures of pipe coming through wall, view of pipe showing shut-off valve, and closer view of pipe with scratch (if applicable).

